

# 25 BEAUTIFUL HOMES

## SMART IDEAS

*Stylish solutions to let the spring light in*

### HOW TO ADD CHARACTER

with colour,  
collectables  
and charm

An ancient  
barn turned  
into a modern  
masterpiece

### KITCHEN UPDATES

Creating space,  
storage and  
sophistication

# TRADING SPACES

*Ed O'Donnell and JP Banks used many clever tricks to transform a dark, poky house into a glamorous, inviting home*

FEATURE AMELIA THORPE  
PHOTOGRAPHY TARAN WILKOHU

## SITTING ROOM

The new staircase is made from acid-washed and oiled mild steel, rubbed back to create a striking patina.

Walls in Inchyra Blue estate emulsion.

£47.95 for 2.5ltr, Farrow & Ball.

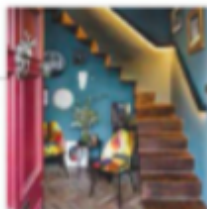
Chairs covered in Graffiti Allover

velvet, Etjom, Timorous Beasties



**DINING AREA**

The shutters were painted burgundy to echo the colour of the sofa. 'Using similar tones throughout creates a subtle sense of flow,' says Ed. Tier on tier shutters, from £225sq m, California Shutters. Bespoke dining table, H&H Concrete Tables. Bespoke Random pendant light, Chia-Ying Lee at Studio If

**HOME TRUTHS****THE PROPERTY**

Victorian end-of-terrace house

**LOCATION** South London

**ROOMS** Sitting room, kitchen-diner, study, terrace, two bedrooms, bathroom

**PURCHASED** 2014

**PREVIOUS PROPERTY**

'Before moving here, we lived in a small flat nearby,' says Ed.

Searching for a home with more space than their small flat, Ed O'Donnell and his partner, JP Flanks, viewed a seemingly endless selection of rather dreary properties in their quest for a place to renovate. 'We wanted to stay in Brixton, because we love its vibrancy, great restaurants, concert venues and art fair,' says interior designer Ed, who is co-founder and creative director of design studio Angel O'Donnell. 'We looked at lots of flats, then the estate agent showed us this – a house! Albeit a small one with a strange staircase, but still, it had more space than anything we'd looked at previously.'

Ed believes that the dark interior, cramped by a staircase that took a curious route right across the main living area to the bay window, had put off other potential buyers. But these factors were much less of a deterrent for Ed, given his professional skills, and JP, who has a strong sense of art and design. Together, they planned a new layout, resolving the staircase conundrum by replacing the old one with a contemporary folded steel version, tucked into one corner of the sitting room so that it was less obtrusive. 'I was inspired by a loft apartment in east London,' says Ed of his design.

'Our aim was to make a narrow, dark house feel brighter, taller and bigger,' he continues. 'In the end, we gutted the house so that nothing

**SITTING ROOM**

A vintage cocktail cart and sleek armchair add glamour to this space. Matthew Hilton Balzac armchair, from £2,428, SCP. Super 8 pendant light, price on request, Le Deun Luminaires. St Pancras oak parquet flooring, from £97.84sq m, Broadleaf

**TERRACE**

A former junk storage area is now a Mediterranean-inspired space.

Try Garden Trading's Hampstead chair, £480 for two. Topps Tiles' Henley Cool Corner tiles, from £47.01sq m, are similar

**KITCHEN**

Smart new handles bring an elegant touch to the simple door fronts.

Knobs, £30 each; pull bars, from £45 each, Buster + Punch. No Pattern doors in RAL Gentian Blue, from £54 each, Superfront

## MASTER BEDROOM

The black floor and richly coloured furnishings create an opulent look, while the walls and ceiling have been kept neutral for a calm feel.

Blind in Kayapo Perroquet fabric, £176m, Lelièvre. Headboard in Tatiana Maize velvet, £83.50m, Romo. Throw in Kaleido Oxide velvet, £147.50m, Black Edition



remained apart from the walls, then refurbished it.' In addition to removing a door between the sitting room and kitchen to create an open-plan layout, the pair also replaced two small windows and a back door with bifolds to introduce more natural light into the kitchen.

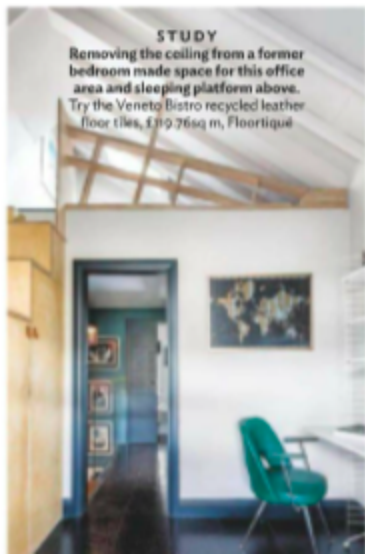
'We love entertaining,' says Ed. The galley-style kitchen allows room for a showpiece dining table, made from dye-injected concrete finished with a glossy resin. The cabinets were inspired by the look of a deli, with marble worktops and open shelving made from planks of wane edge oak. 'The contrast of natural stone and wood against the black industrial-style shelf brackets and the blue units is striking,' says Ed.

Bold use of colour continues in the sitting room, its walls painted in a smoky blue. 'A dark tone makes a room feel sumptuous and luxurious, and larger because the walls seem pushed back, especially if you paint the woodwork in a similar or darker shade,' says Ed. Subtle lighting and richly coloured upholstery add to the glamorous mood, while personality comes from the couple's art collection, a shared passion.

Upstairs, Ed and JP moved the bathroom from one side of the house to the other, in order to gain a window and introduce natural light. They also replaced standard internal doors with ones that slide into pockets, so saving space, and built a first floor extension to create a small dressing area. But probably the most significant improvement was to open up the roof space to create a lofty feel in the master bedroom, and to make space for a study and new sleeping platform at the front of the house. 'That extra height has made a dramatic difference,' says Ed. 'It's hard to believe that the house was once so cramped and awkward.'

## STUDY

Removing the ceiling from a former bedroom made space for this office area and sleeping platform above. Try the Veneto Bistro recycled leather floor tiles, £19.76sq m, Floortique



## BATHROOM

Ed and JP took inspiration from the boutique Ace Hotel in New York to create this stark, urban-style scheme, which features simple metro tiles and monochrome fittings.

Ex.T Gus basin, £1,349; Vola HV1 basin mixer, from £471.60, both CP Hart