

Interior design house Angel O'donnell unveils their latest project

Founded by Richard Angel and Ed O'Donnell, interior design house Angel O'Donnell, has been making waves in the property sector since launching in 2018, having designed for some of the best developers including Canary Wharf Group, St James and Rocket Properties, as well as several HNW private clients in Mayfair and Soho.



Whilst they choose not to have a 'house style', they have become known for their love of bold colours, rich tones and statement headboards, which have become a signature feature for them. They are also focused on creating interiors that help to lift spirits and enhance wellbeing wherever possible. Their latest project, a stunning apartment with expansive roof terrace at The Dumont, a landmark new riverside development on the Albert Embankment, London, by British property developer, St James, is a great example of this.

The apartment, which offers panoramic views over the London skyline, sits on the 18th floor of the new 180-apartment building and is being brought to market this Autumn.

Taking inspiration from the building's position on the banks of the River Thames, the designers sought to balance sophisticated luxury with a fresh and contemporary feel to appeal to a range of prospective purchasers and occupiers.



Ed O'Donnell, co-founder of Angel O'Donnell, said: *"We recognised that a building like this, with its striking architecture and prominent location in the heart of the city overlooking the river, would appeal to a range of discerning buyers who would likely be well travelled, design-savvy and have an appreciation for art."*

"We therefore wanted to create a stylish home to suit, with rich colours, interesting textures and softer edges to complement the building's bold architecture. We took inspiration from the river and introduced subtle curves throughout the apartment such as the sofa we designed in the living room, to mirror the patterns of the River Thames below, helping to ground the home to its location."

"Catering to a diverse audience, we also took inspiration from Asia, the Middle East, Europe, the US and Africa – this international influence can be seen in the selection of

artwork as well as the shapes, colours and fabrics used throughout."

The living area is very much designed to be the heart of the home and the furniture in this space has been thoughtfully curated and positioned so as to be as inviting as possible to guests whilst not overshadowing or detractive from the magnificent views over London.

Ed added: *"The view is undoubtedly one of the most spectacular features of this property, so we wanted to make sure that it was showcased and unobstructed as much as possible."*

The designers opted for a selection of low-rise seating comprising a stunning navy blue curved sofa designed by Angel O'Donnell, which sits prominently at one end of the room and a purple sofa in the centre, both in velvet by Sahco. On the far side by the windows sit two white swivel chairs upholstered in a Mark Alexander wool boucle to mirror the chairs in the nearby kitchen, and which are ideally positioned to enjoy the views.



Two low coffee tables by Julian Chichester are placed in the centre of the seating area, finished in a dark brown vellum and glass top. Further accents of colour and texture are added in the accessories including cushions from De La Cuona and Jonathan Adler, along with a rug from the Rug Company which is inspired by the river. Angel O'Donnell also created bespoke joinery housing the bi-ethanol fireplace, which is covered in a bronze metal and forms a striking centrepiece for the living room.

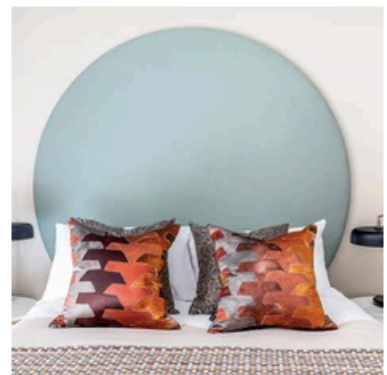
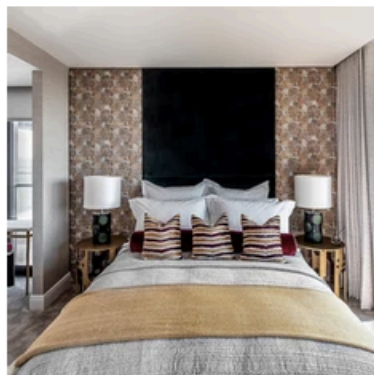
The apartment utilises clever 'zoning' techniques through the use of sliding bifold door with glass detailing between the living space, kitchen and dining room. They can be opened up for a more expansive and free-flowing feel, or closed to create privacy and allow the spaces to be used for a multitude of functions.

The dining room, which leads directly off the living room, features a large oval shaped wooden dining table with a pedestal base covered in liquid metal with dining chairs, all designed by Angel O'Donnell. A drinks cabinet adds a touch of glamour to the space and is finished in a leather shagreen and features a selection of British spirits and mixers as well as award-winning English sparkling wine from Roebuck Estates in Sussex. A hallway showcasing a range of artwork curated by art consultants Cramer & Bell, whose other clients include Soho House, leads on to the bedrooms and creates a reason to linger.

The master bedroom oozes glamour yet in a stylish and contemporary way, with bold colours used to accent the space and bring warmth into the room. In what has become somewhat of a signature for Angel O'Donnell, a large statement full-wall headboard takes centre stage and commands attention. The deep-panelled headboard wall in taupe leather is inspired by the art deco design of the building.



Adding a pop of colour to the wall is a large acrylic artwork above the bed by Artist Tate Gall entitled 'Trees', which features triangular shapes symbolising Fire, which promotes creativity in Feng Shui. A limited-edition print above the chest of drawers is by London-based Icelandic artist Kristjana Williams, who recently collaborated with Paul Smith and Penhaligon's and also designed the cover of Coldplay's live album, Head Full of Dreams.



The second bedroom features a beautiful upholstered wall in a deep pile velvet with embroidered side panels while a third bedroom embraces curves with a round headboard in a pale blue, reflecting the river below.



As well as the stunning interiors, the apartment also features a large 1,867 sq ft terrace which is complete with an outdoor kitchen and bar area, extensive seating and outdoor furniture from Indian Ocean and Cane Line and a hot tub, making it the perfect place to entertain or simply relax in the sunshine and take in the views over London.

Richard Angel MRICS, co-founder of Angel O'Donnell, said: *"This is undoubtedly one of the most impressive apartments in London, so we wanted to create a bold look that would showcase the space in all its glory. We treat each project individually and don't apply a 'house style' as such, but rather a set of principles that we feel best suits the property in question.*

"At The Dumont, we were excited to inject colour, texture and warmth into the space whilst emphasising the property's key feature – its spectacular views – and subtly referencing the prime location on the river throughout."

Angel O'Donnell's work at The Dumont follows a busy period of commissions over the last couple of years which have included designing the penthouse at The Atlas Building, the tallest residential building Shoreditch, all of the communal areas known as 'Club Vertus' at Canary Wharf Group's 10 George Street, a new Build-to-Rent development in Canary Wharf, as well as a selection of private client projects in Soho and Mayfair.

www.angelodonnell.com