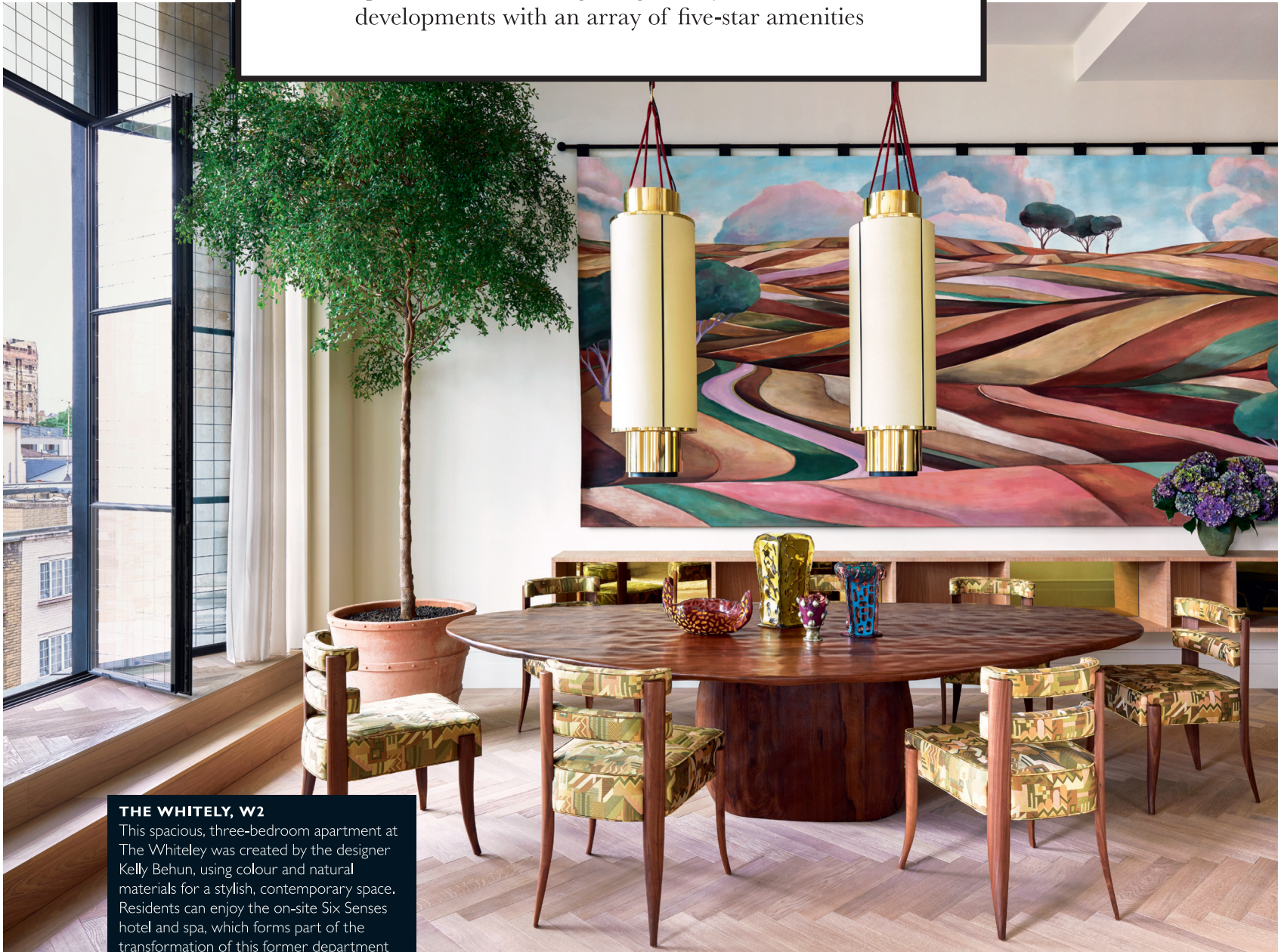


CONDÉ NAST
BRITAIN | PROPERTY

LONDON CALLING

From grand old buildings to bold new towers – the capital is home to a beguiling variety of new residential developments with an array of five-star amenities



THE WHITELEY, W2

This spacious, three-bedroom apartment at The Whiteley was created by the designer Kelly Behun, using colour and natural materials for a stylish, contemporary space. Residents can enjoy the on-site Six Senses hotel and spa, which forms part of the transformation of this former department store, £12.5 million, thewhiteleylondon.com

Like all great cities, the landscape of London is constantly changing. Nowhere is this more apparent than in the world of high-end residential developments, which have seen some of the city's most iconic and historic buildings reimaged,

repurposed, and given a new lease of life. From famous department stores and former government offices to soaring architectural landmarks, there is an extraordinary range of locations that capture the imagination and offer the chance to live somewhere that feels brand new, yet is steeped in a rich heritage.

Many who choose to buy in prime

central London are doing so because it's an appealing lifestyle investment, hence why this part of the property market is perennially popular.

'Despite the obvious geopolitical headwinds and domestic uncertainty, the prime development market has performed strongly once again,' says Rupert des Forges of Knight Frank, citing several examples of super-prime

HURLINGHAM WATERFRONT, SW6

Enjoy a front-row view of the Boat Race at Hurlingham Waterfront, a new collection of apartments in Fulham with fantastic views of the river, currently under construction. Highlights will include the extensive private gardens, while the 'wild-garden' penthouses, with landscaped roof terraces, are sure to be in demand. From £595,000.

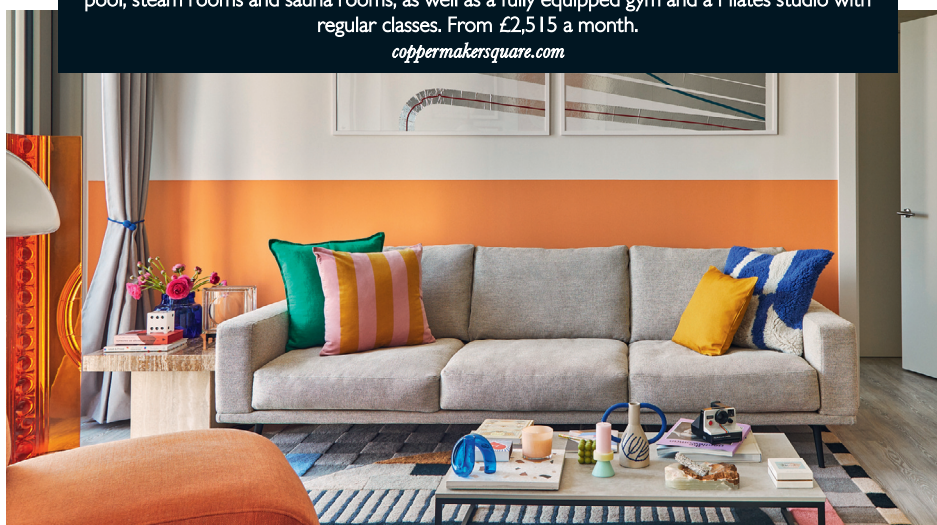
hurlinghamwaterfront.co.uk



COPPERMAKER SQUARE, E20

This brand-new development in the heart of Stratford comprises 225 rental apartments, ranging from studios up to three-bedroom properties. Amenities include a 25-metre indoor pool, steam rooms and sauna rooms, as well as a fully equipped gym and a Pilates studio with regular classes. From £2,515 a month.

coppermakersquare.com



NO.1 GROSVENOR SQUARE, W1

Spanning almost 5,000 square feet, The Oval Residence is the last available unit at the celebrated No.1 Grosvenor Square development. Designed by Studio Lodha's creative director, Blandine de Navacelle, the three-bedroom property is the epitome of sophisticated elegance, £21.5 million.

1gsq.com | studiolodha.com



PHOTOGRAPH: Paul Raeside

developments that have recently sold out, such as Regent's Crescent, Harcourt House and the first apartment phases at Chelsea Barracks. 'The top end of the market has been driven by a concentration of buyers from the west coast of the US and mainland China,' he continues. 'The market remains active despite increased caution, while the main demand drivers continue to



CENTRE POINT, WCI

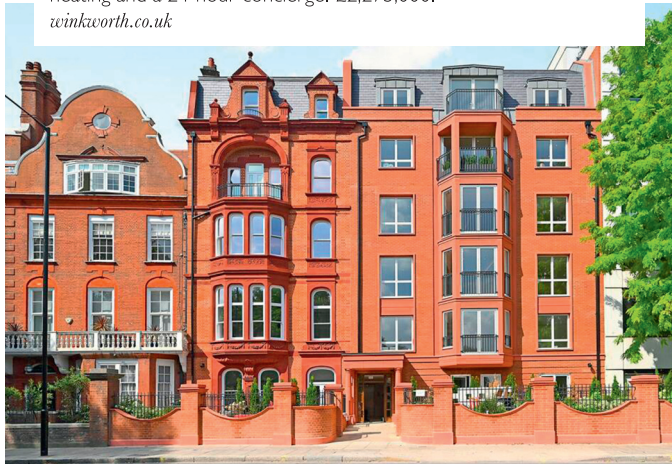
Located at the nexus of Covent Garden, Bloomsbury, Soho and Fitzrovia, Centre Point is one of London's most recognisable and iconic landmarks. This three-bedroom apartment, with interiors by design studio Angel O'Donnell, is part of the Vantage collection – so named because of the extraordinary views. From £7,825,000.

centrepoinresidences.co.uk

154 BAYSWATER ROAD, W2

Overlooking London's Hyde Park and close to Kensington Palace Gardens, this Victorian mansion block has been meticulously restored, with interiors by the fashion designer Elie Saab. There's a two-bedroom duplex with a stylish open-plan living area, and a generous, park-facing terrace, as well as air conditioning, underfloor heating and a 24-hour concierge. £2,275,000.

winkworth.co.uk



GOODLUCK HOPE, E14

This new riverside development is located in London's historic Docklands, close to Canary Wharf. Providing 841 new homes, the development will also provide a grocery, a deli and a coffee shop, while shared amenities include an indoor pool, a cinema and a sky lounge, located on the 29th floor. From £430,000.

goodluckhope.com

be education and London's traditional value as a defensive asset class for many nationalities.'

Some of the most sought-after developments that still have some remaining availability include The Whiteley in Bayswater, which was originally a historic department store. The grand façade and soaring lobby are guaranteed to impress all who visit, and it's also the home of a new Six Senses hotel and spa. Another

noteworthy project lies nearby at Park Modern, which offers residents uninterrupted views across the green spaces of Hyde Park. There's a 24-hour concierge and valet parking, and an entire floor given over to the wellness facilities, which include a 25-metre pool, a sauna and steam rooms, as well as a salon. The majority of the 57 apartments and penthouses have already sold – there are just a few remaining units left in the final phase.

Also overlooking Hyde Park is The Bryanston, where apartments range from one to six bedrooms. The interiors have high ceilings and generous proportions – inspired by the townhouses of Mayfair – although the curving lines of Rafael Viñoly's soaring tower are proudly modern.

The lucky residents of each of these brand-new developments quite literally have the city at their doorstep – and a very desirable address to call home.

PARK MODERN, W2

Looking south over Hyde Park and Kensington Palace Gardens, Park Modern provides 57 residences ranging from one to six bedrooms. There's a restaurant by Jeremy King, 30,000 square feet of five-star amenities, and private balconies from which to admire the views.

parkmodern.com



PHOTOGRAPH: Fenton Whelan / Grant Frazer

OWO, SW1

With all the services of London's flagship Raffles hotel on hand, apartments at the OWO development in Whitehall are in high demand. Apartment 4.04 is one of the most recent residences to be completed – with interiors by RJP Design, this three-bedroom duplex is steeped in style and character. £15.5 million.

theowo.london



THE STAGE, EC2

Galliard Homes has transformed the site of Shakespeare's original Curtain Theatre into a new destination in which to live, work and play. The 37-storey tower contains 412 apartments, with a sky terrace and underground amusement arcade, alongside the preserved archaeological remains of Shakespeare's iconic playhouse. From £750,000. thestageshoreditch.com



THE BRYANSTON, W1

Standing at 18 storeys high, The Bryanston is the tallest building to overlook Hyde Park – the curving tower has been designed to make the most of the 360-degree views. Pictured is a three-bedroom apartment designed by London-based studio Albion Nord. From £2.4 million.

thebryanston.co.uk